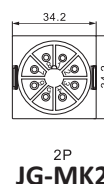
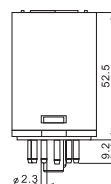


GENERAL PURPOSE RELAY

JG-MK/LY SERIES

TECHNICAL DETAILS		JG-LY2	JG-LY4	JG-MK2	JG-MK3
Terminal layout		2Z	2Z	2Z	3Z
Contact capacity	AC	10A 250V	10A 250V	10A 250V	10A 250V
	DC	10A 30V	10A 30V	10A 30V	10A 30V
Contact resistance (mΩ)		≤50mΩ	≤50mΩ	≤50mΩ	≤50mΩ
Insulation resistance (MΩ)		≥100MΩ	≥500MΩ	≥500MΩ	≥500MΩ
Dielectric strength	BOC	1000VAC	1500VAC	1500VAC	1500VAC
	BCC	1500VAC	1500VAC	1500VAC	1500VAC
Coil nominal voltage	AC	6 to 240V	6 to 380V	6 to 380V	6 to 380V
	DC	6 to 220V	6 to 220V	6 to 220V	6 to 220V
Coil nominal power	AC	0.9VA to 1.2VA	≤2.8 VA	≤2.8 VA	≤2.8 VA
	DC	≤0.9W	≤1.6W	≤1.6W	≤1.6W
Electrical life(OPS)		105	105	105	105
Mechanical life(OPS)		107	107	107	107
Operating temperature(°C)		-40°C to 60°C	-40°C to 60°C	-40°C to 60°C	-40°C to 60°C
Weight(g)		≤35	≤80	≤80	≤80
Mounting methods		Printed-circuit board	Outlet Flange	Outlet Outlet.	Outlet



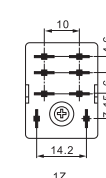
2P
JG-MK2



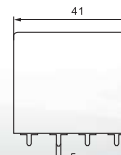
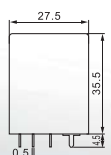
3P
JG-MK3



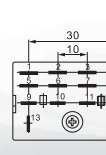
JG-LY2



1Z



JG-LY4



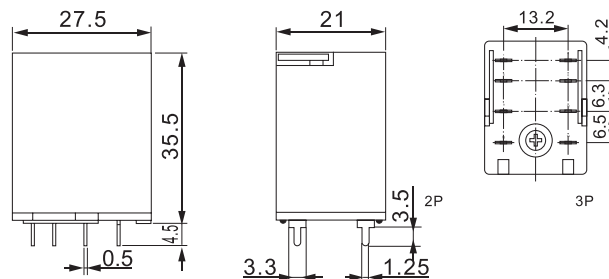
GENERAL PURPOSE RELAY

JG-MY SERIES

TECHNICAL DETAILS		JG-MY2	JG-MY3	JG-MY4	JG-G2R1/2
Terminal layout		2Z	3Z	4Z	1Z, 2Z
Contact capacity	AC	5A 250V	5A 250V	3A 250V	10A 250V
	DC	5A 30V	5A 30V	3A 30V	10A 30V
Contact resistance	(mΩ)	≤50mΩ	≤50mΩ	≤50mΩ	≤100mΩ
Insulation resistance	(MΩ)	≥100MΩ	≥100MΩ	≥100MΩ	≤1000mΩ
Dielectric strength	BOC	1000VAC	1000VAC	1000VAC	1000VAC
	BCC	1500VAC	1500VAC	1500VAC	4000VAC
Coil nominal voltage	AC	6 to 240V	6 to 240V	6 to 240V	6 to 240V
	DC	6 to 220V	6 to 220V	6 to 220V	6 to 220V
Coil nominal power	AC	0.9VA to 1.2VA	0.9VA to 1.2VA	0.9VA to 1.2VA	0.55W
	DC	≤0.9W	≤0.9W	≤0.9W	
Electrical life(OPS)		105	105	105	105
Mechanical life(OPS)		107	107	107	107
Operating temperature(°C)		-40°C to 60°C	-40°C to 60°C	-40°C to 60°C	-40°C to 60°C
Mounting methods		Printed-circuit board, Outlet.	Printed-circuit board, Outlet.	Printed-circuit board, Outlet	Outlet



JG-MY Series



JG-G2R Series

