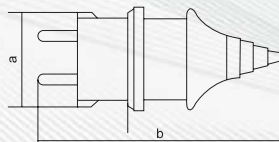


# INDUSTRIAL PLUG & SOCKET

## INDUSTRIAL PLUG



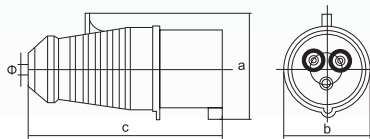
Application	Code	Normal Current	Normal Voltage	No.poles	Protection Degree
Plug	<b>JG-012</b>	16A	220-250V~	2P+E	IP44



Size(mm)	a	b	Cable nominal cross section area
Type			
<b>JG-012</b>	40	96	1-2.5mm <sup>2</sup>



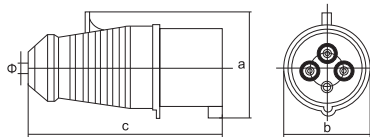
Application	Code	Normal Current	Earth contact Position	Normal Voltage	No.poles	Protection Degree
Plug	<b>JG-013</b>	16A	6h	220-250V~	2P+E	IP44
Plug	<b>JG-023</b>	32A	6h	220-250V~	2P+E	IP44



Size(mm)	a	b	c	Φ	Cable nominal cross section area
Type					
<b>JG-013</b>	59	51	122	6	1-2.5mm <sup>2</sup>
<b>JG-023</b>	75	64	136	8	2.5-6mm <sup>2</sup>



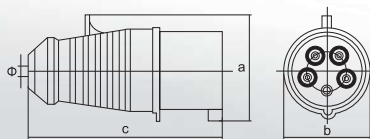
Application	Code	Normal Current	Earth contact Position	Normal Voltage	No.poles	Protection Degree
Plug	<b>JG-014</b>	16A	6h	380-415V~	3P+E	IP44
Plug	<b>JG-024</b>	32A	6h	380-415V~	3P+E	IP44



Size(mm)	a	b	c	Φ	Cable nominal cross section area
Type					
<b>JG-014</b>	65	55	122	6	1-2.5mm <sup>2</sup>
<b>JG-024</b>	75	64	136	8	2.5-6mm <sup>2</sup>



Application	Code	Normal Current	Earth contact Position	Normal Voltage	No.poles	Protection Degree
Plug	<b>JG-015</b>	16A	6h	220-380V~ 240-415V~	3P+N+E	IP44
Plug	<b>JG-025</b>	32A	6h	220-380V~ 240-415V~	3P+N+E	IP44

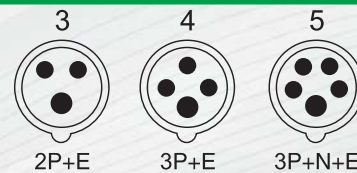


Size(mm)	a	b	c	Φ	Cable nominal cross section area
Type					
<b>JG-015</b>	72	64	130	8	1-2.5mm <sup>2</sup>
<b>JG-025</b>	84	70	143	8	2.5-6mm <sup>2</sup>

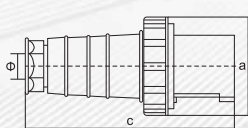


# INDUSTRIAL PLUG & SOCKET

## INDUSTRIAL PLUG



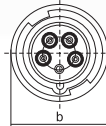
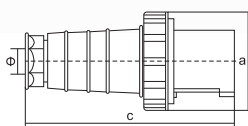
Application	Code	Normal Current	Earth contact Position	Normal Voltage	No.poles	Protection Degree
Plug	<b>JG-033</b>	63A	6h	220-250V~	2P+E	IP67
Plug	<b>JG-043</b>	125A	6h	220-250V~	2P+E	IP67



Size(mm)	a	b	c	Φ	Cable nominal cross section area
Type					
<b>JG-033/043</b>	108	108	230	16	6-16mm <sup>2</sup>



Application	Code	Normal Current	Earth contact Position	Normal Voltage	No.poles	Protection Degree
Plug	<b>JG-035</b>	63A	6h	220-380V~ 240-415V~	3P+N+E	IP67
Plug	<b>JG-045</b>	125A	6h	220-380V~ 240-415V~	3P+N+E	IP67



Size(mm)	a	b	c	Φ	Cable nominal cross section area
Type					
<b>JG-035/045</b>	108	108	230	16	6-16mm <sup>2</sup>

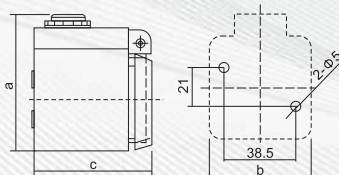


# INDUSTRIAL PLUG & SOCKET

## INDUSTRIAL WALL SOCKETS



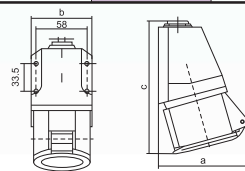
Application	Code	Normal Current	Normal Voltage	No.poles	Protection Degree
Socket	<b>JG-112</b>	16A	220-250V~	2P+E	IP44



Size(mm)	a	b	c	Cable nominal cross section area
<b>JG-112</b>	70	53	67	1-2.5mm <sup>2</sup>



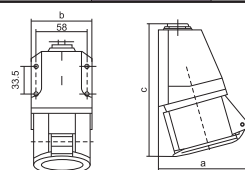
Application	Code	Normal Current	Earth contact Position	Normal Voltage	No.poles	Protection Degree
Socket	<b>JG-113</b>	16A	6h	220-250V~	2P+E	IP44
Socket	<b>JG-123</b>	32A	6h	220-250V~	2P+E	IP44



Size(mm)	a	b	c	Cable nominal cross section area
<b>JG-113</b>	90	71	135	1-2.5mm <sup>2</sup>
<b>JG-123</b>	100	71	151	2.5-6mm <sup>2</sup>



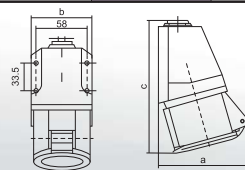
Application	Code	Normal Current	Earth contact Position	Normal Voltage	No.poles	Protection Degree
Socket	<b>JG-114</b>	16A	6h	380-415V~	3P+E	IP44
Socket	<b>JG-124</b>	32A	6h	380-415V~	3P+E	IP44



Size(mm)	a	b	c	Cable nominal cross section area
<b>JG-114</b>	92	71	140	1-2.5mm <sup>2</sup>
<b>JG-124</b>	102	71	151	2.5-6mm <sup>2</sup>



Application	Code	Normal Current	Earth contact Position	Normal Voltage	No.poles	Protection Degree
Socket	<b>JG-115</b>	16A	6h	220-380V~ 240-415V~	3P+N+E	IP44
Socket	<b>JG-125</b>	32A	6h	220-380V~ 240-415V~	3P+N+E	IP44



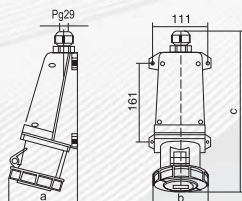
Size(mm)	a	b	c	Cable nominal cross section area
<b>JG-115</b>	100	71	131	1-2.5mm <sup>2</sup>
<b>JG-125</b>	109	71	152	2.5-6mm <sup>2</sup>

# INDUSTRIAL PLUG & SOCKET

## INDUSTRIAL WALL SOCKETS



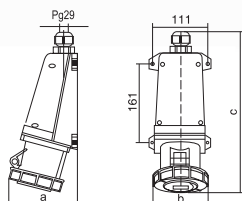
Application	Code	Normal Current	Earth contact Position	Normal Voltage	No.poles	Protection Degree
Socket	<b>JG-133</b>	63A	6h	220-250V~	2P+E	IP67
Socket	<b>JG-143</b>	125A	6h	220-250V~	2P+E	IP67



Size(mm)	a	b	c	Cable nominal cross section area
Type				
<b>JG-133/143</b>	133	108	310	6-25mm <sup>2</sup>



Application	Code	Normal Current	Earth contact Position	Normal Voltage	No.poles	Protection Degree
Socket	<b>JG-135</b>	63A	6h	220-380V~ 240-415V~	3P+N+E	IP67
Socket	<b>JG-145</b>	125A	6h	220-380V~ 240-415V~	3P+N+E	IP67



Size(mm)	a	b	c	Cable nominal cross section area
Type				
<b>JG-135/145</b>	133	108	310	6-25mm <sup>2</sup>

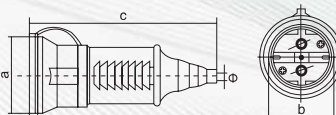


# INDUSTRIAL PLUG & SOCKET

## INDUSTRIAL STRAIGHT SOCKETS



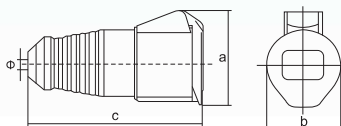
Application	Code	Normal Current	Normal Voltage	No.poles	Protection Degree
Coupler	<b>JG-212</b>	16A	220-250V~	2P+E	IP44



Size(mm)	a	b	c	Cable nominal cross section area
Type				
<b>JG-212</b>	72	48	123	1-2.5mm <sup>2</sup>



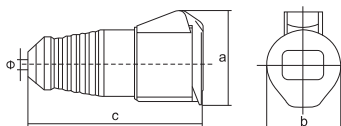
Application	Code	Normal Current	Earth contact Position	Normal Voltage	No.poles	Protection Degree
Coupler	<b>JG-213</b>	16A	6h	220-250V~	2P+E	IP44
Coupler	<b>JG-223</b>	32A	6h	220-250V~	2P+E	IP44



Size(mm)	a	b	c	Φ	Cable nominal cross section area
Type					
<b>JG-213</b>	72	51	132	6	1-2.5mm <sup>2</sup>
<b>JG-223</b>	92	64	146	8	2.5-6mm <sup>2</sup>



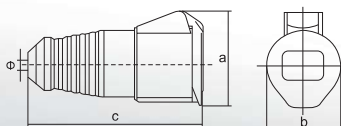
Application	Code	Normal Current	Earth contact Position	Normal Voltage	No.poles	Protection Degree
Coupler	<b>JG-214</b>	16A	6h	380-415V~	3P+E	IP44
Coupler	<b>JG-224</b>	32A	6h	380-415V~	3P+E	IP44



Size(mm)	a	b	c	Φ	Cable nominal cross section area
Type					
<b>JG-214</b>	78	55	132	6	1-2.5mm <sup>2</sup>
<b>JG-224</b>	92	64	146	8	2.5-6mm <sup>2</sup>



Application	Code	Normal Current	Earth contact Position	Normal Voltage	No.poles	Protection Degree
Coupler	<b>JG-215</b>	16A	6h	220-380V~ 240-415V~	3P+N+E	IP44
Coupler	<b>JG-225</b>	32A	6h	220-380V~ 240-415V~	3P+N+E	IP44



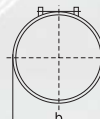
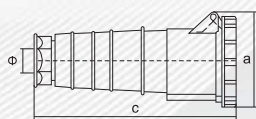
Size(mm)	a	b	c	Φ	Cable nominal cross section area
Type					
<b>JG-215</b>	92	63	139	6	1-2.5mm <sup>2</sup>
<b>JG-225</b>	101	70	154	8	2.5-6mm <sup>2</sup>

# INDUSTRIAL PLUG & SOCKET

## INDUSTRIAL STRAIGHT SOCKETS



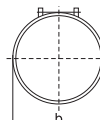
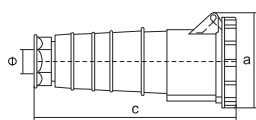
Application	Code	Normal Current	Earth contact Position	Normal Voltage	No.poles	Protection Degree
Coupler	<b>JG-233</b>	63A	6h	220-250V~	2P+E	IP67
Coupler	<b>JG-243</b>	125A	6h	220-250V~	2P+E	IP67



Size(mm)	a	b	c	Cable nominal cross section area
Type				
<b>JG-233/243</b>	116	108	245	6-16mm <sup>2</sup>



Application	Code	Normal Current	Earth contact Position	Normal Voltage	No.poles	Protection Degree
Coupler	<b>JG-235</b>	63A	6h	220-380V~ 240-415V~	3P+N+E	IP67
Coupler	<b>JG-245</b>	125A	6h	220-380V~ 240-415V~	3P+N+E	IP67

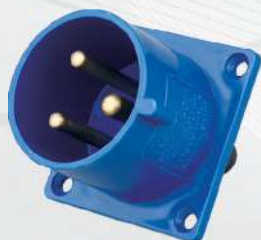


Size(mm)	a	b	c	Cable nominal cross section area
Type				
<b>JG-235/245</b>	116	108	245	6-16mm <sup>2</sup>

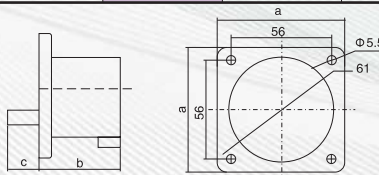


# INDUSTRIAL PLUG & SOCKET

## INDUSTRIAL REV PLUG



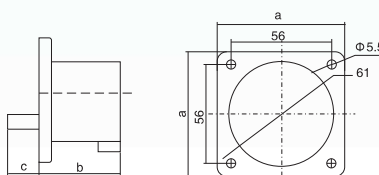
Application	Code	Normal Current	Earth contact Position	Normal Voltage	No.poles	Protection Degree
Plug	<b>JG-613</b>	16A	6h	220-250V~	2P+E	IP44
Plug	<b>JG-623</b>	32A	6h	220-250V~	2P+E	IP44



Size(mm)	a	b	c	Cable nominal cross section area
Type				
<b>JG-613</b>	70	41	24	1-2.5mm <sup>2</sup>
<b>JG-623</b>	70	50	28	2.5-6mm <sup>2</sup>



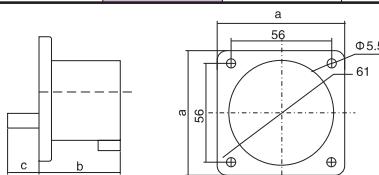
Application	Code	Normal Current	Earth contact Position	Normal Voltage	No.poles	Protection Degree
Plug	<b>JG-614</b>	16A	6h	380-415V~	3P+E	IP44



Size(mm)	a	b	c	Cable nominal cross section area
Type				
<b>JG-614</b>	70	41	24	1-2.5mm <sup>2</sup>



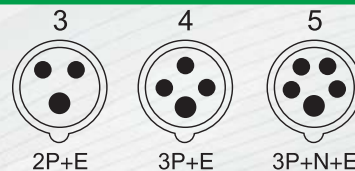
Application	Code	Normal Current	Earth contact Position	Normal Voltage	No.poles	Protection Degree
Plug	<b>JG-615</b>	16A	6h	220-380V~ 240-415V~	3P+N+E	IP44
Plug	<b>JG-625</b>	32A	6h	220-380V~ 240-415V~	3P+N+E	IP44



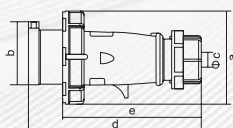
Size(mm)	a	b	c	Cable nominal cross section area
Type				
<b>JG-615</b>	70	41	24	1-2.5mm <sup>2</sup>
<b>JG-625</b>	70	51	29	2.5-6mm <sup>2</sup>

# INDUSTRIAL PLUG & SOCKET

## INDUSTRIAL PLUG IP 67



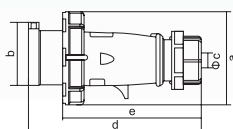
Application	Code	Normal Current	Earth contact Position	Normal Voltage	No.poles	Protection Degree
Plug	<b>JG-0132</b>	16A	6h	220-250V~	2P+E	IP67
Plug	<b>JG-0232</b>	32A	6h	220-250V~	2P+E	IP67



Size(mm)		a	b	Φc	d	e	Cable nominal cross section area
Type							
<b>JG-0132</b>		75.5	47	7-15	139	112	1-2.5mm <sup>2</sup>
<b>JG-0232</b>		99	63	10-20	175	130	2.5-6mm <sup>2</sup>



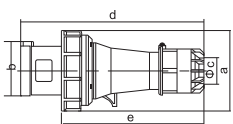
Application	Code	Normal Current	Earth contact Position	Normal Voltage	No.poles	Protection Degree
Plug	<b>JG-0152</b>	16A	6h	220-380V~ 240-415V~	3P+N+E	IP67
Plug	<b>JG-0252</b>	32A	6h	220-380V~ 240-415V~	3P+N+E	IP67



Size(mm)		a	b	Φc	d	e	Cable nominal cross section area
Type							
<b>JG-0152</b>		92	60	8-16	139	95	1-2.5mm <sup>2</sup>
<b>JG-0252</b>		107	70	12-22	170	124	2.5-6mm <sup>2</sup>



Application	Code	Normal Current	Earth contact Position	Normal Voltage	No.poles	Protection Degree
Plug	<b>JG-0352</b>	63A	6h	220-380V~ 240-415V~	3P+N+E	IP67



Size(mm)		a	b	Φc	d	e	Cable nominal cross section area
Type							
<b>JG-0352</b>		116	75	37	251	187	6-16mm <sup>2</sup>



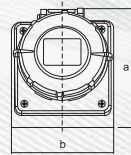
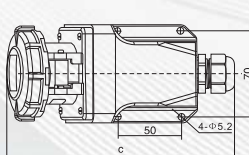


# INDUSTRIAL PLUG & SOCKET

## INDUSTRIAL WALL SOCKET IP 67



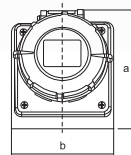
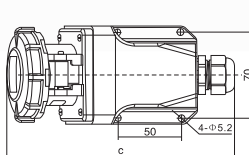
Application	Code	Normal Current	Earth contact Position	Normal Voltage	No.poles	Protection Degree
Socket	<b>JG-1132</b>	16A	6h	220-250V~	2P+E	IP67
Socket	<b>JG-1232</b>	32A	6h	220-250V~	2P+E	IP67



Type	Size(mm)			Cable nominal cross section area
	a	b	c	
<b>JG-1132</b>	95	75	193	1-2.5mm <sup>2</sup>
<b>JG-1232</b>	105	75	203	2.5-6mm <sup>2</sup>



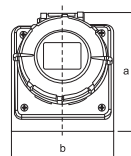
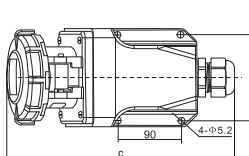
Application	Code	Normal Current	Earth contact Position	Normal Voltage	No.poles	Protection Degree
Socket	<b>JG-1152</b>	16A	6h	220-380V~ 240-415V~	3P+N+E	IP67
Socket	<b>JG-1252</b>	32A	6h	220-380V~ 240-415V~	3P+N+E	IP67



Type	Size(mm)			Cable nominal cross section area
	a	b	c	
<b>JG-1152</b>	100	75	185	1-2.5mm <sup>2</sup>
<b>JG-1252</b>	105	75	200	2.5-6mm <sup>2</sup>



Application	Code	Normal Current	Earth contact Position	Normal Voltage	No.poles	Protection Degree
Socket	<b>JG-1352</b>	63A	6h	220-380V~ 240-415V~	3P+N+E	IP67



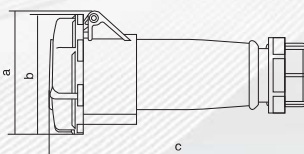
Type	Size(mm)			Cable nominal cross section area
	a	b	c	
<b>JG-1352</b>	130	105	275	10-16mm <sup>2</sup>

# INDUSTRIAL PLUG & SOCKET

## INDUSTRIAL STRAIGHT SOCKET IP 67



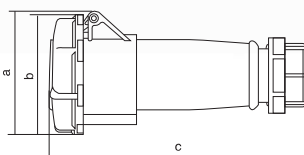
Application	Code	Normal Current	Earth contact Position	Normal Voltage	No.poles	Protection Degree
Coupler	<b>JG-2132</b>	16A	6h	220-250V~	2P+E	IP67
Coupler	<b>JG-2232</b>	32A	6h	220-250V~	2P+E	IP67



Size(mm) Type	a	b	c	Cable nominal cross section area
	<b>JG-2132</b>	79	77	
<b>JG-2232</b>	102	102	205	2.5-6mm <sup>2</sup>



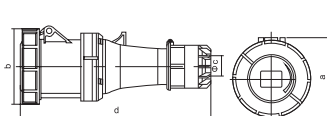
Application	Code	Normal Current	Earth contact Position	Normal Voltage	No.poles	Protection Degree
Coupler	<b>JG-2152</b>	16A	6h	220-380V~ 240-415V~	3P+N+E	IP67
Coupler	<b>JG-2252</b>	32A	6h	220-380V~ 240-415V~	3P+N+E	IP67



Size(mm) Type	a	b	c	Cable nominal cross section area
	<b>JG-2152</b>	97	90	
<b>JG-2252</b>	109	103	210	2.5-6mm <sup>2</sup>



Application	Code	Normal Current	Earth contact Position	Normal Voltage	No.poles	Protection Degree
Coupler	<b>JG-2352</b>	63A	6h	220-380V~ 240-415V~	3P+N+E	IP67

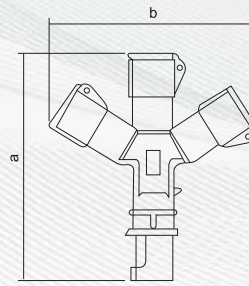
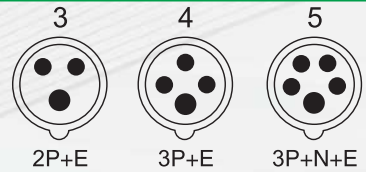


Size(mm) Type	a	b	c	d	Cable nominal cross section area
	<b>JG-2352</b>	114	117	37	

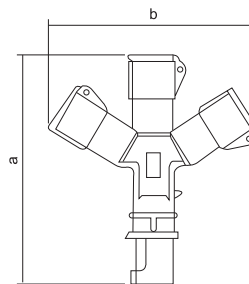


# INDUSTRIAL PLUG & SOCKET

## MULTI-FUNCTION PLUG & SOCKET CONNECTOR



Code	Normal Current	Earth Contact Position	Normal Voltage	No.poles	Protection Degree	Size(mm)	
						a	b
<b>JG-1013</b>	16A	6h	220-240V~	2P+E	IP44	223	220
<b>JG-1023</b>	32A	6h	220-240V~	2P+E	IP44	318	305



Code	Normal Current	Earth Contact Position	Normal Voltage	No.poles	Protection Degree	Size(mm)	
						a	b
<b>JG-1015</b>	16A	6h	220-380V~ 240-415V~	3P+N+E	IP44	305	295

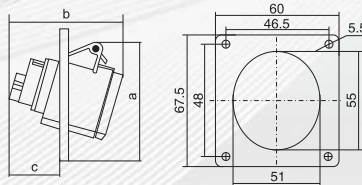


# INDUSTRIAL PLUG & SOCKET

## ANGULAR PLUG & SOCKET



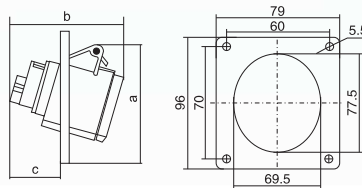
Application	Code	Normal Current	Earth contact Position	Normal Voltage	No.poles	Protection Degree
Socket	<b>JG-413</b>	16A	6h	220-250V~	2P+E	IP44



Size(mm)	a	b	c	Cable nominal cross section area
Type				
ZZ-413	74	72	45	1-2.5mm <sup>2</sup>



Application	Code	Normal Current	Earth contact Position	Normal Voltage	No.poles	Protection Degree
Socket	<b>JG-425</b>	32A	6h	220-380V~ 240-415V~	3P+N+E	IP44

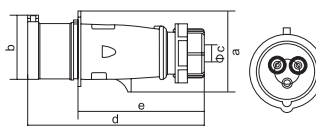


Size(mm)	a	b	c	Cable nominal cross section area
Type				
ZZ-425	102	95	51	2.5-6mm <sup>2</sup>

## 3RD GENERATION INDUSTRIAL PLUG



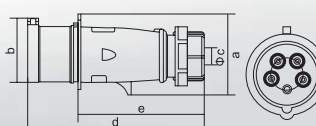
Application	Code	Normal Current	Earth contact Position	Normal Voltage	No.poles	Protection Degree
Plug	<b>JG-013X</b>	16A	6h	220-250V~	2P+E	IP44
Plug	<b>JG-023X</b>	32A	6h	220-250V~	2P+E	IP44



Size(mm)	a	b	Φc	d	e	Cable nominal cross section area
Type						
<b>JG-013X</b>	58	47	7-15	135	104	1-2.5mm <sup>2</sup>
<b>JG-023X</b>	80.7	63	10-20	171	130	2.5-6mm <sup>2</sup>



Application	Code	Normal Current	Earth contact Position	Normal Voltage	No.poles	Protection Degree
Plug	<b>JG-015X</b>	16A	6h	220-380V~ 240-415V~	3P+N+E	IP44
Plug	<b>JG-025X</b>	32A	6h	220-380V~ 240-415V~	3P+N+E	IP44



Size(mm)	a	b	Φc	d	e	Cable nominal cross section area
Type						
<b>JG-015X</b>	75	60	8-16	145	112	1-2.5mm <sup>2</sup>
<b>JG-025X</b>	89	70	12-22	178	132	2.5-6mm <sup>2</sup>

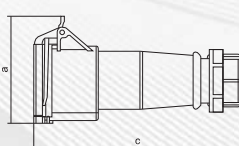


# INDUSTRIAL PLUG & SOCKET

## 3RD GENERATION INDUSTRIAL STRAIGHT SOCKET



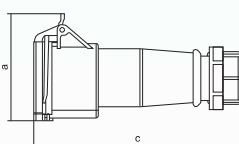
Application	Code	Normal Current	Earth contact Position	Normal Voltage	No.poles	Protection Degree
Coupler	<b>JG-213X</b>	16A	6h	220-250V~	2P+E	IP44
Coupler	<b>JG-223X</b>	32A	6h	220-250V~	2P+E	IP44



Size(mm)		a	b	c	Cable nominal cross section area
Type					
<b>JG-213X</b>		83	60	155	1-2.5mm <sup>2</sup>
<b>JG-223X</b>		102	82.5	195	2.5-6mm <sup>2</sup>



Application	Code	Normal Current	Earth contact Position	Normal Voltage	No.poles	Protection Degree
Coupler	<b>JG-215X</b>	16A	6h	$\frac{220-380V}{240-415V}$	3P+N+E	IP44
Coupler	<b>JG-225X</b>	32A	6h	$\frac{220-380V}{240-415V}$	3P+N+E	IP44

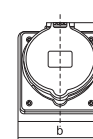
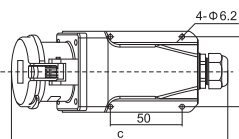


Size(mm)		a	b	c	Cable nominal cross section area
Type					
<b>JG-215X</b>		100	76	160	1-2.5mm <sup>2</sup>
<b>JG-225X</b>		110	90	200	2.5-6mm <sup>2</sup>

## 3RD GENERATION INDUSTRIAL WALL SOCKET



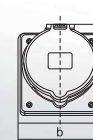
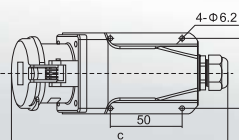
Apellation	Code	Normal Current	Earth contact Position	Normal Voltage	No.poles	Protection Degree
Socket	<b>JG-113X</b>	16A	6h	220-250V~	2P+E	IP44
Socket	<b>JG-123X</b>	32A	6h	220-250V~	2P+E	IP44



Size(mm)		a	b	c	Cable nominal cross section area
Type					
<b>JG-113X</b>		104	80	181	1-2.5mm <sup>2</sup>
<b>JG-123X</b>		114	80	192	2.5-6mm <sup>2</sup>



Apellation	Code	Normal Current	Earth contact Position	Normal Voltage	No.poles	Protection Degree
Socket	<b>JG-115X</b>	16A	6h	$\frac{220-380V}{240-415V}$	3P+N+E	IP44
Socket	<b>JG-125X</b>	32A	6h	$\frac{220-380V}{240-415V}$	3P+N+E	IP44



Size(mm)		a	b	c	Cable nominal cross section area
Type					
<b>JG-115X</b>		110	80	181	1-2.5mm <sup>2</sup>
<b>JG-125X</b>		114	80	192	2.5-6mm <sup>2</sup>