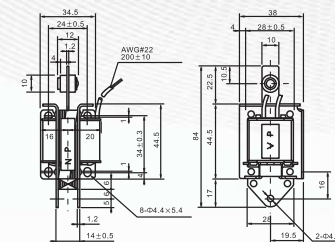


SOLENOID COIL

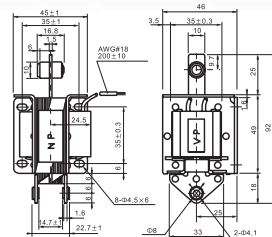
Code	Rated Voltage (V)	Rated Force (N)	Rated Stroke (mm)	Operating Frequency	Weight																																			
JG-992	36 110 220 380	5	10	1500	0.5 Kg																																			
JG-2402	36 110 220 380	10	15	1200	1 Kg																																			
JG-2502	36 110 220 380	15	1200	1.5 Kg	JG-2602	36 110 220 380	20	15	1200	2 Kg	JG-3502	36 110 220 380	30	20	720	3 Kg	JG-3602	36 110 220 380	40	20	720	4 Kg	JG-3702	36 110 220 380	50	20	720	5 Kg	JG-4502	36 110 220 380	60	30	360	6 Kg	JG-4602	36 110 220 380	70	30	360	7 Kg
JG-2602	36 110 220 380	20	15	1200	2 Kg																																			
JG-3502	36 110 220 380	30	20	720	3 Kg																																			
JG-3602	36 110 220 380	40	20	720	4 Kg																																			
JG-3702	36 110 220 380	50	20	720	5 Kg																																			
JG-4502	36 110 220 380	60	30	360	6 Kg																																			
JG-4602	36 110 220 380	70	30	360	7 Kg																																			



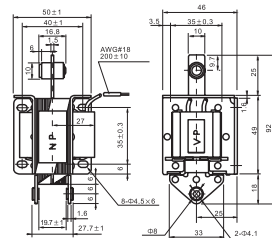
JG-992



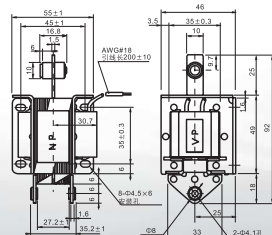
JG-2402



JG-2502



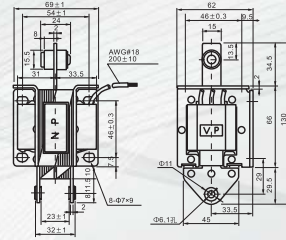
JG-2602



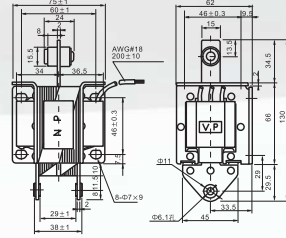
SOLENOID COIL



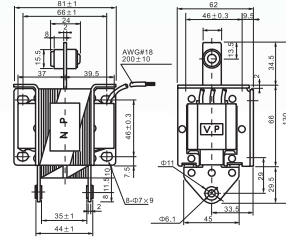
JG-3502



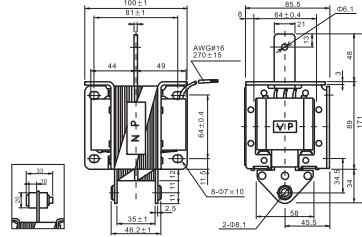
JG-3602



JG-3702



JG-4502



JG-4602

