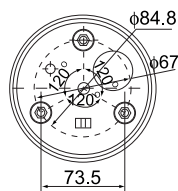
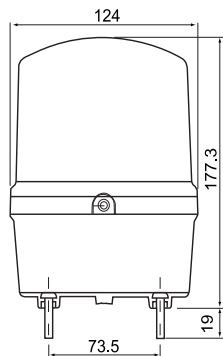


REVOLVING LIGHT

FEATURES

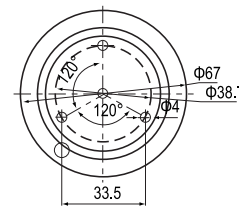
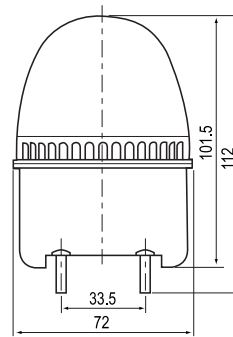
- With a Magnet, Sound can be customized
- Circular chassis with fixed bottom making installation easier.
- In case of product using input AC voltage for 12V to 24V DC, power supply is required.
- Material: Lens-PC, Body-ABS
- Certification : CE
- Protection class: IP30

1103 LED Series



External Drawing

2071 Flashing Signal Light



External Drawing

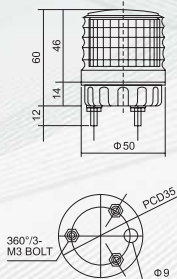
Technical Specification

Model	Voltage	Current	Flashes Per Min.	Color
JG-LTE	DC12V	0.090A	60-80/ Per Min.	■ R
	DC24V	0.080A		■ Y
1103/J	AC110V	0.042A		■ G
2071/J	AC220V	0.021A		■ B

J : With Buzzer

REVOLVING LIGHT

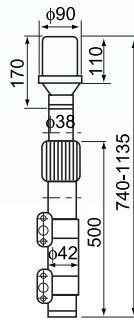
STROBE WARNING LIGHT



Technical Specification

Model	Voltage	Power	Color
JG-N504	AC220V	3W	■ R ■ Y ■ G ■ B

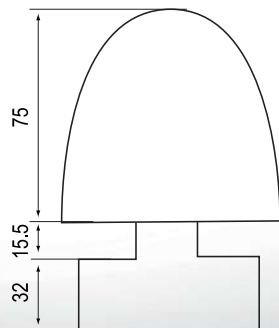
CAR SIGNAL LIGHT



Technical Specification

Model	Voltage	Color
JG-N3093	DC12V/24V	■ R

Warning Signal Light



Technical Specification

Model	Voltage	Color
JG-N-TX	AC 220V	■ R

- Sound can be customized
- High brightness LED lamps
- Having a built-in switch for steady / flashing selection.
- Semi-permanent in the self-life of light source and suitable for machines having lots of vibration and impact and for places where bulb change is difficult.
- Material: Lens-PC, Body-ABS
- Protection class: IP30

