

House of Switchgear, Control Panel Accessories, Wires & Cables

Pittale Apartment, First Floor, 527 Budhwar Peth, Tapkir Galli,

Pune - 411002. ☎ : 24456774, 24491816, 66029641 / 642.

M : 7875758405 / 08. 7875758265 / 7875758239

Email : sales@sanjayelectricalspune.com • accounts@sanjayelectricalspune.com

www.sanjayelectricalspune.com

PRICE LIST
WITH EFFECT FROM
1-10-2024

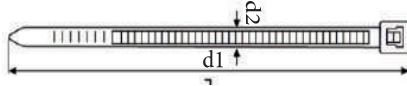


SELF LOCKING PA 66 CABLE TIES

CE ROHS HSN CODE: 39235090

Note:

- Price For Black Colour Cable Ties Will be 10 % Additional
- Price For Coloured Cable Ties Will be 15% Additional
- Price For Weather Proof UV Cable Ties Will be 25% Additional



Cat. No.	Nominal Overall Length		Strap Width		Max Bundle Cable Dia.		Thick-ness	Min Loop Tensile Strength		M.R.P. Rs.	Std. Pkg.	Std. Pkg. (PCS/PAC)
	d1 mm	inch	d2 mm	inch	mm	inch		kgf	lbs			
ET 100 X 2.5	100	4.0	2.5	0.10	20	0.79	0.9	0.8	18	28.00	100	600
ET 150 X 2.5	150	6.0	2.5	0.10	35	1.38	1.2	8	18	38.00	100	400
ET 150 X 3.6	150	6.0	3.6	0.14	35	1.38	1.2	18	40	62.00	100	300
ET 200 X 3.6	200	8.0	3.6	0.14	45	1.77	1.2	18	40	76.00	100	200
ET 200 X 4.8	200	8.0	4.8	0.19	45	1.77	1.3	23	50	107.00	100	150
ET 200 X 7.6	200	8.0	7.6	0.30	45	1.77	1.4	36	80	-----	100	80
ET 250 X 3.6	250	10.0	3.6	0.14	65	2.56	1.2	18	40	98.00	100	150
ET 250 X 4.8	250	10.0	4.8	0.19	60	2.36	1.3	23	50	129.00	100	150
ET 300 X 3.6	300	12.0	3.6	0.14	75	2.95	1.2	18	40	113.00	100	150
ET 300 X 4.8	300	12.0	4.8	0.19	75	2.95	1.3	23	50	159.00	100	150
ET 300 X 7.6	300	12.0	7.6	0.30	75	2.95	1.4	54.4	120	317.00	100	60
ET 350 X 4.8	350	14.0	4.8	0.19	90	3.60	1.3	23	50	195.00	100	120
ET 400 X 4.8	400	16.0	4.8	0.19	105	4.20	1.3	23	50	225.00	100	90
ET 450 X 4.8	450	18.0	4.8	0.19	115	4.53	1.3	23	50	265.00	100	60
ET 400 X 7.6	400	16.0	7.6	0.30	100	3.93	1.4	54.4	120	-----	100	60
ET 450 X 7.6	450	18.0	7.6	0.30	115	4.60	1.4	54.4	120	-----	100	-----
ET 550 X 7.6	550	22.0	7.6	0.30	145	5.80	1.4	54.4	120	-----	100	-----
ET 600 X 7.6	600	23.63	7.6	0.30	148	6.00	1.4	54.4	120	-----	100	-----
ET 650 X 7.6	650	26.0	7.6	0.30	180	7.20	1.4	54.4	120	-----	100	-----
ET 750 X 7.6	750	30.0	7.6	0.30	220	8.80	1.4	54.4	120	-----	100	-----
ET 920 X 9.0	920	36.8	9.0	0.35	255	10.20	1.55	80.0	175	-----	100	-----

Technical Details	
• Material	PA 66 UL Certified 94V-2
• Operating Temp	-10°C to 130°C
• Oxygen Index	25% - 28%
• Smoke Density	Flaming 35 No Flaming 13

TAG TYPE SERIES

HSN CODE: 39235090

Cat. No.	d1mm	inch	d2mm	inch	mm	inch	mm	kgf	lbs	M.R.P. Rs. PerPacked	CTN Packed	Pieces Packed
ET-T 100 X 2.5	100	4	2.5	0.10	20	0.79	0.9	8	18	100.00	400	100



SELF ADHESIVE TIE MOUNT

HSN CODE: 39269099



Cat. No.	Size	M.R.P. Rs. Per Packet	Std. Pkg.
ETHD-19	19mm x 19mm	225.00	100 Nos
ETHD-25	25mm x 25mm	330.00	100 Nos
ETHD-40	40mm x 40mm	510.00	100 Nos

Colour shade : White

3M gumming sticker on request.

AIR- VENT

(VALUE & ECONOMIC SERIES)

CE ROHS⁺ HSN CODE: 84213100

Cat. No.	Size	M.R.P. Rs.	Std.Pkg.
ETAV-01	130mmX130mm (SCREW FIT)	54.00	300 Nos
ETAV-01 VP	130mmX130mm(SCREW FIT) (VP-10 Nos.)	480.00	30 Packs
ETAV-02	147mmX147mm (SNAP FIT)	81.00	200 Nos
ETAV-02 VP	147mmX147mm (SNAP FIT) (VP-10 Nos.)	755.00	24 Packs
ETAV-03	184mmX184mm (SCREW FIT)	157.00	150 Nos
ETAV-03 VP	184mmX184mm (SCREW FIT) (VP-10 Nos.)	1325.00	16 Packs
ETAV-04	203mmX203mm (SNAP FIT)	190.00	100 Nos
ETAV-04 VP	203mmX203mm (SNAP FIT) (VP-10 Nos.)	1750.00	12 Packs
ETAV-05	238mmX238mm (SCREW FIT)	280.00	60 Nos
ETAV-05 VP	238mmX238mm (SCREW FIT) (VP-5 Nos.)	1300.00	12 Packs
ETAV-06	255mmX255mm (SNAP FIT)	350.00	60 Nos
ETAV-06 VP	255mmX255mm (SNAP FIT) (VP-5 Nos.)	1670.00	12 Packs
ETAV-09	325mmX325mm (SNAP FIT)	615.00	25 Nos
ETAV-10	117mmX117mm (SNAP FIT)	75.00	150 Nos
ETAV-11	90mmX90mm (SCREW FIT)	55.00	200 Nos
ETAV-204/D T	204mmX204mm (DOOM TYPE)	275.00	50 Nos
ETAV-255/D T	255mmX255mm (DOOM TYPE)	435.00	50 Nos
ETAD-285	285mmX285mm (SCREW FIT) (ADAPTOR)	140.00	50 Nos



Colour Shade- RAL7035 /RAL7032
COLOUR ON REQUEST RAL 9005(BLACK)

AIR- VENT (OVAL DESIGN)

(WITH E.P.D.M GASKETING)

CE ROHS⁺ IP54 IP55 HSN CODE: 84213100

Cat. No.	Size	M.R.P.	Std.Pkg.
ETAV-150/SF-4 EG	150mm x 150mm	130.00	150 Nos
ETAV-204/SF-4/6 EG	204mm x 204mm	270.00	100 Nos
ETAV-255/SF-6/8EG	255mm x 255mm	430.00	50 Nos
ETAV-117/SF-3/3.5EG	117mm x 117mm	95.00	150 Nos
ETAV-204/D T-1EG	204mm x 204mm (Doom T type)	320.00	50 Nos
ETAV-255/D T-1EG	255mm x 255mm (Doom Type)	480.00	50 Nos

Colour Shade- RAL7035 COLOUR ON REQUEST RAL 9005(BLACK)



DOCUMENT HOLDER

CE ROHS⁺ HSN CODE: 39261019

◆ With adhesive Double sided tape

Cat. No.	Size	M.R.P. Rs.	Std.Pkg.
ETDH-01	188mm x 185mm x 20mm Deep	65.00	100 Nos
ETDH-02	258mm x 235mm x 35 Deep (A-4 Size)	125.00	50 Nos
ETDH-03	282mm x 236mm x 17 Deep (A-4 Size)	115.00	100 Nos



ETDH-01 ETDH-02 ETDH-03
Colour Shade - RAL-7035 Screw Fit Material: A.B.S.

JUNCTION BOX

CE ROHS⁺ IP65 HSN CODE: 85359040

JUNCTION BOX W/O Connector IP-65

Cat. No.	Size	M.R.P. Rs.	Std.Pkg.
ET - 9020	88mm x 88mm x 53mm	150.00	150 Nos
ET - 9040	98mm x 98mm x 61mm	165.00	150 Nos
ET - 9060	139mm x 119mm x 70mm	255.00	50 Nos
ET - 9100	167mm x 125mm x 82mm	375.00	30 Nos
ET - 9250	200mm x 160mm x 98mm	665.00	30 Nos
ET - 9350	260mm x 210mm x 117mm	1340.00	10Nos



Colour Shade - RAL-7035 Material: A.B.S.

JUNCTION BOX With Brass Connector IP-65

Cat. No.	Size	M.R.P. Rs.	Std.Pkg.
ET - 9020E	88mm x 88mm x 53mm (2.5 Sq.mm)	190.00	150 Nos
ET - 9040E	98mm x 98mm x 61mm (4/6 Sq.mm)	210.00	150 Nos
ET - 9060E	139mm x 119mm x 70mm (10 Sq.mm)	320.00	50 Nos
ET - 9100E	167mm x 125mm x 82mm (16 Sq.mm)	715.00	30 Nos
ET - 9250E	200mm x 160mm x 98mm (16 Sq.mm)	1140.00	30 Nos
ET - 9350E	260mm x 210mm x 117mm (25 Sq.mm)	1700.00	10Nos

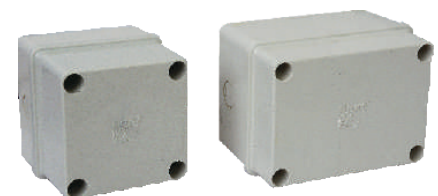
CE ROHS⁺ IP55 IP65 HSN CODE: 85359040



Colour Shade - RAL-7035 Material: A.B.S.

Cat. No.	Size	Without Groumet M.R.P. Rs.	Std.Pkg.
ET - 10107	100mm x 100mm x 70mm	86.00	200 Nos
ET - 15117	150mm x 110mm x 70mm	145.00	75 Nos
ET - 15157	150mm x 150mm x 70mm	170.00	75Nos
ET - 20107	200mm x 100mm x 70mm	173.00	50 Nos
ET - 20168	200mm x 155mm x 80mm	225.00	50 Nos
ET - 26208	255mm x 200mm x 80mm	325.00	30 Nos
ET - 302512	300mm x 250mm x 120mm	650.00	20 Nos
ET - 302515	300mm x 250mm x 150mm	720.00	10 Nos
ET - 403512	400mm x 350mm x 120mm	1500.00	7 Nos

CE ROHS⁺ IP67 HSN CODE: 85359040



Colour Shade - RAL-7035 Material: A.B.S.

Cat No.	Size	With Gourmet M.R.P. Rs.	Transparent M.R.P. Rs.	Std. Pkg.
ET-6001	110mmX110mmX110mm	250.00	300.00	50 Nos
ET-6002	155mmX115mmX110mm	310.00	375.00	50 Nos

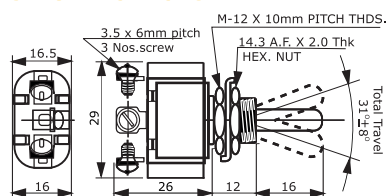
TOGGLE SWITCHES

CE ROHS⁺ HSN CODE: 85361010

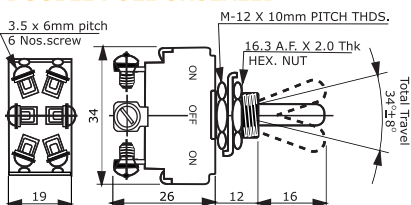


6A/10A /15A 250AC SINGLE & DOUBLE POLE

SINGLE POLE UNSEALED



DOUBLE POLE UNSEALED



Cat. No.	Description	Rating	M.R.P Rs.	Std.Pkg
ETS-601	SPST ON- OFF	6A	75.00	30 NOS
ETS-602	SPDT ON ON	6A	82.00	30 NOS
ETS-603	SPDT ON-OFF-ON	6A CENTRE OFF	82.00	30 NOS
ETS-606	DPST ON-OFF	6A	92.00	30 NOS
ETS-607	DPDT ON ON	6A	102.00	30 NOS
ETS-608	DPDT ON-OFF-ON	6A CENTRE OFF	102.00	30 NOS
ETS-1001	SPST ON- OFF	10A	80.00	30 NOS
ETS-1002	SPDT ON ON	10A	86.00	30 NOS
ETS-1003	SPDT ON-OFF-ON	10A CENTRE OFF	86.00	30 NOS
ETS-1006	DPST ON-OFF	10A	95.00	30 NOS
ETS-1007	DPDT ON ON	10A	103.00	30 NOS
ETS-1008	DPDT ON-OFF-ON	10A CENTRE OFF	103.00	30 NOS
ETS-1501	SPST ON- OFF	15A	92.00	30 NOS
ETS-1502	SPDT ON ON	15A	100.00	30 NOS
ETS-1503	SPDT ON-OFF-ON	15A CENTRE OFF	100.00	30 NOS
ETS-1506	DPST ON-OFF	15A	112.00	30 NOS
ETS-1507	DPDT ON ON	15A	125.00	30 NOS
ETS-1508	DPDT ON-OFF-ON	15A CENTRE OFF	125.00	30 NOS

Electrical and Mechanical Specifications

- Housing material : Polybutylene Terephthalate (PBT)
- Rated and uninterrupted current : 6A,10 A,15A, & 20A
- Rated operating frequency : 50 Hz/60 Hz
- Rated operating voltage : 250 V. AC
- Ambient temperature : -10°C to 55°C
- Rated impulse voltage : 1.5 Kv for one minute

PANEL DOOR SWITCHES

Electrical and Mechanical Specifications

- Operations : Push-to-ON and Push-to-OFF
- Rated operating voltage : 250 V. AC
- Ambient temperature : -10°C to 55°C
- Rated impulse voltage : 1.5 Kv for one minute
- Contact resistance : <20 milli Ω
- Operating force: 0.8 kg (Max)
- Housing Material : (ABS) plastic
- Rated & uninterrupted current : 2A and 5A
- Rated operating frequency : 50 Hz/60 Hz
- Insulation resistance : >20 Mega Ω
- Mounting : M14 Brass and Aluminium Nuts
- Housing Shade : White, Black and Grey.
- Mechanical Life : 50,000 operations



Cat. No.	Colour	M.R.P. Rs.	Std.Pkg.
ETDS-01	White & Black	44.00	1000 Nos

PUSH BUTTON STATION

CE ROHS⁺ HSN CODE: 85359090



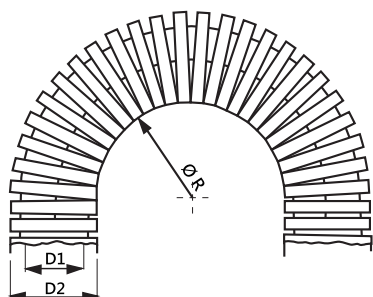
Colour shade BLACK & Top White

Material: A.B.S.

Cat. No.	Size	Item	M.R.P. Rs.	Std.Pkg.
ETPB-01	73mm x 73mm x68mm	1Way	53.00	200 Nos
ETPB-02	113mm x 73mm x68mm	2Way	68.00	150 Nos
ETPB-03	153mm x 73mm x68mm	3Way	88.00	100 Nos
ETPB-04	192mm x 73mm x68mm	4Way	106.00	80 Nos
ETPB-06	252mm x 73mm x68mm	6Way	185.00	50 Nos

POLYAMIDE FLEXIBLE CONDUIT & SLITTED CONDUIT

HSN CODE 39172190



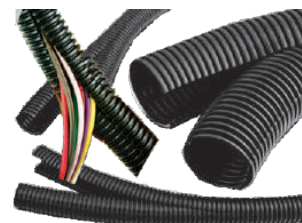
DIMENSION DRAWING & TECHNICAL DETAILS

Technical Details :

Material	Polyamide 6
Flexural Strength	950 kg / cm ²
Flexural Modulus	26,000 kg / cm ²
Tensile Strength	700 kg / cm ²
Impact Strength	25 kg / cm ²
Temperature Range	-40°C to +105°C Continuous, +150°C Short Term
Resistant	Alcohol, Benzol, Greases, Mineral Oil, Diesel Fuel, Sea Water, Petrol, etc.
Protection Class	IP 67
Approvals	CE ROHS



POLYAMIDE FLEXIBLE PIPE



POLYAMIDE FLEXIBLE SLITTED PIPE

Cat. No.	Conduit Gland Size	I.D. d1 (mm)	O.D. d2 (mm)	Bending Radius R (mm) + 10%	M.R.P. Rs.	Std.Pkg. mtr.
ETP-10	ETG-7	6.4	10.0	20	20.00	1000
ETP-13.5	ETG-9	9.6	13.0	30	24.00	1000
ETP-16	ETG-11	11.8	15.8	40	32.00	500
ETP-18.5	ETG-13.5	14.3	18.5	42	37.00	500
ETP-22	ETG-16	15.9	21.2	45	45.00	500
ETP-28	ETG-21	21.7	28.5	55	69.00	300
ETP-34	ETG-29	27.8	34.5	60	90.00	250
ETP-42	ETG-36	36.0	42.5	65	135.00	125
ETP-54	ETG-48	48.3	54.5	80	250.00	100

SLITTED PIPE EXTRA 10%

P.P. FLEXIBLE CONDUIT

HSN CODE 39172190

● Prices are on Request.

Cat. No. Black	Cat. No. White	Size	Maximum O.d.(mm)	Maximum I. D.(mm)	Tolerance On O.d.(mm)	Std.Pkg. mtr.
ET-PP-10	ET-PP-10	PG-10	10.0	7.0	-0.1	1000
ET-PP-16	ET-PP-16	PG-16	16.0	10.7	-0.3	500
ET-PP-20	ET-PP-20	PG-20	20.0	14.1	-0.3	500
ET-PP-25	ET-PP-25	PG-25	25.0	18.3	-0.4	500
ET-PP-32	ET-PP-32	PG-32	32.0	24.3	-0.4	250
ET-PP-40	ET-PP-40	PG-40	40.0	31.2	-0.4	125
ET-PP-50	ET-PP-50	PG-50	50.0	39.6	-0.5	100

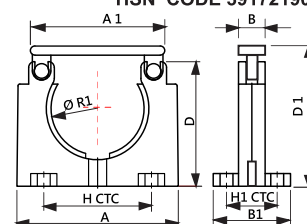


POLYAMIDE FLEXIBLE CONDUIT CLAMP

HSN CODE 39172190



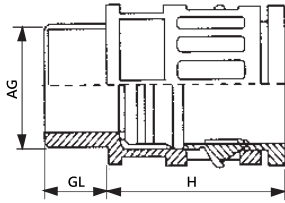
Material	Polyamide 6
Temperature Range	-40°C to +105°C Continuous, +150°C Short Term
Resistant	Alcohol, Benzol, Greases, Mineral Oil, Diesel Fuel, Sea Water, Petrol, etc.
Approvals	CE ROHS



Cat. No.	Clamp Size	A mm	A 1 mm	B mm	B1 mm	D mm	D 1 mm	H mm CTC	H1 mm CTC	R1 mm	M.R.P. Rs.	Std.Pkg.
ETC-7	ETP-10	-----	-----	-----	-----	-----	-----	-----	-----	-----	-----	-----
ETC-9	ETP-13.5	24.00	18.00	10.00	28.00	23.00	26.00	-----	20.00	10.00	15.00	100
ETC-11	ETP-16	28.00	22.00	14.00	32.00	24.00	28.00	-----	24.00	14.00	17.00	100
ETC-13.5	ETP-18.5	30.00	25.00	14.00	34.00	25.00	30.00	-----	24.00	15.00	18.00	100
ETC-16	ETP-22	34.00	28.00	14.00	34.00	22.00	34.00	-----	26.00	20.00	19.00	100
ETC-21	ETP-28	39.00	39.00	14.00	38.00	40.00	44.00	-----	27.00	25.00	22.00	50
ETC-29	ETP-34	45.00	45.00	14.00	38.00	44.00	50.00	36.00	27.00	33.00	38.00	50
ETC-36	ETP-42	55.00	55.00	14.00	41.00	53.50	59.00	37.00	27.00	40.50	43.00	25
ETC-48	ETP-54	70.00	70.00	14.00	41.00	65.00	73.00	57.00	27.00	48.00	60.00	25

POLYAMIDE CONDUIT GLAND

CE ROHS HSN CODE 39172190



Technical Details :

Material Polyamide 6	Resistant Alcohol, Benzol, Greases, Mineral Oil, Diesel Fuel, Sea Water, Petrol, etc.
Temperature Range -40°C to +105°C Continuous, +150°C Short Term	

Cat. No.	Conduit Size	(AG) mm	(AG) mm Thread Length	(GL)mm	(H) mm	Std.Pkg.	M.R.P. Rs.
ETG-7	ETP-10	12.3	6.5	11.5	18.0	100 Nos	12.00
ETG-9	ETP-13.5	15.0	10.0	11.5	19.0	100 Nos	18.00
ETG-11	ETP-16	18.4	12.5	12.0	23.0	100 Nos	20.00
ETG-13.5	ETP-18.5	20.2	14.3	12.0	12.0	100 Nos	24.00
ETG-16	ETP-22	22.3	17.0	13.0	27.0	100 Nos	30.00
ETG-21	ETP-28	28.0	23.0	13.0	33.0	50 Nos	45.00
ETG-29	ETP-34	36.7	29.0	15.0	35.0	25 Nos	55.00
ETG-36	ETP-42	46.7	36.0	15.0	38.5	20 Nos	60.00
ETG-48	ETP-54	59.0	53.0	16.0	39.0	10 Nos	120.00

POLYAMIDE FLEXIBLE CONDUIT METRIC GLANDS

CE ROHS HSN CODE 39172190

● Prices are on Request.

Cat. No.	Conduit Gland Size	ID D1 (mm)	OD D2 (mm)	Std.Pkg.	Price
ETMG-16	ETG-7	6.4	10.0	100 Nos	----
ETMG-20 M-20 (M-15.8)	ETG-9	9.6	13.0	100 Nos	----
ETMG-20 M-20 (M-21.2)	ETG-11	11.8	15.8	100 Nos	65
ETMG-25 M-25 (M-28.5)	ETG-13.5	14.3	18.5	100 Nos	85
ETMG-32 M-32 (M-34.5)	ETG-16	15.9	21.2	50 Nos	115
ETMG-40 M-40 (M-42.5)	ETG-21	21.7	28.5	50 Nos	170
ETMG-50 M-50 (M-54.5)	ETG-29	27.8	34.5	50 Nos	300
ETMG-63 M-63	ETG-36	36.0	42.5	50 Nos	----

Technical Details :

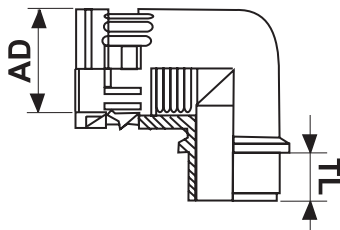
Material Polyamide 6	Resistant Alcohol, Benzol, Greases, Mineral Oil, Diesel Fuel, Sea Water, Petrol, etc.
Temperature Range -40°C to +105°C Continuous, +150°C Short Term	



POLYAMIDE FLEXIBLE CONDUIT 90° ELBOW GLANDS

HSN CODE 39172190

● Prices are on Request.



Cat. No.	Thread (PG)	Conduit Pipe Entry AD (mm)	Threads TL (mm)	Std.Pkg.
ETEG-7	PG 7	10.0	10.0	100 Nos
ETEG-9	PG 9	13.0	10.0	100 Nos
ETEG-11	PG 11	15.8	10.0	100 Nos
ETEG-13.5	PG 13.5	18.5	11.0	100 Nos
ETEG-16	PG 16	21.2	12.0	50 Nos
ETEG-21	PG 21	28.5	12.0	50 Nos
ETEG-29	PG 29	34.5	12.0	50 Nos
ETEG-36	PG 36	42.5	12.0	50 Nos
ETEG-48	PG 48	54.5	14.0	50 Nos

SELECTION CHART FOR CONDUIT GLAND/CLAMP



CONDUIT PIPE CAT. NO.	CONDUIT GLAND CAT. NO.	CONDUIT CLAMP CAT. NO.
ETP-10	ETG-7	ETC-7
ETP-13.5	ETG-9	ETC-9
ETP-16	ETG-11	ETC-11

CONDUIT PIPE CAT. NO.	CONDUIT GLAND CAT. NO.	CONDUIT CLAMP CAT. NO.
ETP-18.5	ETG-13.5	ETC-13.5
ETP-22	ETG-16	ETC-16
ETP-28	ETG-21	ETC-21

CONDUIT PIPE CAT. NO.	CONDUIT GLAND CAT. NO.	CONDUIT CLAMP CAT. NO.
ETP-34	ETG-29	ETG-29
ETP-42	ETG-36	ETG-36
ETP-54	ETG-48	ETG-48

DISTRIBUTION BOX

CE ROHS⁺ IP65 HSN CODE: 85359040



Colour Shade - RAL-7035 Material: A.B.S.

Cat. No.	Size	M.R.P. Rs.	Std.Pkg.
ETDB -02 (2Way)	120mm x 53mm	175.00	150 Nos
ETDB -05 (5Way)	159mm x 119mm	235.00	150 Nos
ETDB -08 (8Way)	201mm x 153mm	410.00	50 Nos
ETDB -12 (12Way)	167mm x 125mm	760.00	30 Nos
ETDB -18 (18Way)	360mm x 194mm	1650.00	30 Nos
ETDB -24 (24Way)	357mm x 271mm	2000.00	30 Nos

CAMERA BOX

CE ROHS⁺ HSN CODE: 85359040

Cat. No.	Size	M.R.P. Rs.	Std. Pack
ETCB-01	100mmx100mmx70mm	57.00	200 NOS
ETCB-02	100mmx100mmx50mm	30.00	360 NOS



Colour Shade - White Material: P.P.

FAN FINGER GUARD

CE ROHS⁺ HSN CODE: 84149090



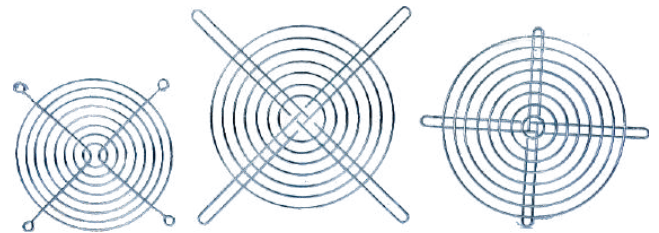
Cat. No.	Size	M.R.P. Rs.	Std.Pkg.
ETFG-01	4" Square (120mm x 120mm)	11.00	500 Nos

Colour Shade - Black Screw Fit Material: A.B.S.

METAL FAN FINGER GUARD

CE ROHS⁺ HSN CODE 84149040

Cat. No.	Size	Std.Pkg.	M.R.P. Rs.
ETMG-01	4" Square (1.6 Thk -8 Ring)	1000 Nos	25.00
ETMG-02	6" Oval (1.6 Thk -7 Ring)	400 Nos	50.00
ETMG-03	6" Square (1.6 Thk -8 Ring)	200 Nos	50.00
ETMG-04	8" Oval (1.6 Thk -11 Ring)	200 Nos	93.00
ETMG-05	8" Square (1.6 Thk -11 Ring)	200 Nos	93.00
ETMG-08	10" Square(1.6 Thk -14 Ring)	100 Nos	-----
ETMG-06	3" Square(1.6 Thk -6 Ring)	1000 Nos	20.00
ETMG-07	3.5" Square(1.6 Thk -8 Ring)	1000 Nos	22.00



Colour Shade - Chrome plated Screw Fit Material: M.S.

SANJAY
electrical

House of Switchgear, Control Panel Accessories, Wires & Cables

Pittale Apartment, First Floor, 527 Budhwar Peth, Tapkir Galli, Pune - 411002.

☎ : 24456774, 24491816, 66029641 / 642.
M : 7875758405 / 08, 7875758265 / 7875758239

Email : sales@sanjayelectricalspune.com

● accounts@sanjayelectricalspune.com

www.sanjayelectricalspune.com

TERMS & CONDITIONS :

- PRICES ARE SUBJECT TO CHANGE WITHOUT ANY PRIOR NOTICE.
- GST EXTRA AS APPLICABLE
- GOODS SOLD WILL NOT BE TAKEN BACK
- THIS PRICE LIST CANCELS ALL OUR PREVIOUS PRICE LISTS.
- SUBJECT TO PUNE JURISDICTION ONLY.